

2022 SKANDIC® SWT

Optimal off-trail traction and flotation with the widest track in the industry.



SKANDIC® SWT
900 ACE™ SHOWN

// PACKAGE HIGHLIGHTS

- Rotax® 600R E-TEC® engine or 900 ACE™ engine with 650W magneto available
- HPG™ rear shock
- 24 in. wide Multi-LinQ plate with 125 lb/56.7 kg cargo capacity
- 4.5 in. digital display
- LTS telescopic front suspension
- SC™-5U articulating rear suspension with locking mechanism (no tool required)
- NEW two color options
- Removable passenger seat with grips
- 23 in. ultra-high windshield with side deflectors
- Hitch receiver with 1,500 lb/680 kg towing capacity when equipped with an HD rear bumper. (1,200 lb/544 kg std.)
- Air radiator with fan
- Standard electric start
- Deep-snow running boards with large openings
- Easy-shift transmission (H-L-N) with RER™ electronic reverse (2-stroke)/electro-mechanical reverse (4-stroke)
- Pivoting mirrors
- pDrive™ clutch
- Low handlebar strap
- Pilot 7.4 skis

ROTAX® ENGINE	600R E-TEC®	900 ACE™
Engine details	Liquid-cooled, two-stroke, eRAVE™	Liquid-cooled, four-stroke D.O.H.C., dry sump
Horsepower	125	95
Cylinders - Displacement	2 - 599.4 cc	3 - 899 cc
Bore - Stroke	72.3 mm - 73 mm	73 mm - 69.7 mm
Carburation	E-TEC® direct injection	EFI
Fuel type - Octane	Premium unleaded - 91	Regular unleaded - 87
Fuel tank	42 L/11.1 US gal	42 L/11.1 US gal
Oil tank capacity	3.4 L/3.6 qt	3.3 L/3.5 qt

POWERTRAIN	600R E-TEC®	900 ACE™
Drive clutch	pDrive™ with clickers	pDrive™ with slider shoes
Driven clutch	QRS	QRS
Drive sprocket pitch	73 mm/2.86 in.	73 mm/2.86 in.

DRY WEIGHT	600R E-TEC®	900 ACE™
Dry weight	287 kg/633 lb	298 kg/657 lb

DIMENSIONS	600R E-TEC®	900 ACE™
Overall vehicle length	3,222 mm/126.9 in.	
Overall vehicle width	1,089 mm/42.8 in.	
Overall vehicle height	1,513 mm/59.6 in.	
Ski stance	889 mm/35 in.	
Track	Silent Cobra SWT:	
(Length x Width x Profile)	154 x 24 x 1.5 in.	

COLOR	600R E-TEC®	900 ACE™
Lava Red / Black		
Black		

SUSPENSION	600R E-TEC®	900 ACE™
Front suspension		LTS
Front shock		Motion Control
Front suspension travel		150 mm/5.9 in.
Rear suspension		SC™-5U
Center shock		Motion Control
Rear shock		HPG™
Rear suspension travel		239 mm/9.4 in.

FEATURES	600R E-TEC®	900 ACE™
Frame		REV® Gen4
Bodywork		Wide design
Skis		Pilot™ 7.4
Seating		2-up modular with underseat storage
Handlebar		U-shaped aluminum with J-hooks/ Low grab handle
Riser block height		145 mm/5.7 in.
Starter		Electric
Reverse		RER™ (2-stroke) Electro-mechanic (4-stroke)
Air radiator		High-efficiency w/ fan (4-stroke) Fan (2-stroke)
Brake system		Brembo brake with stainless-steel braided brake line
Heated throttle lever/grips		Standard (driver only)
Gauge type		4.5 in. digital display
Windshield		585 mm/23 in. with mirrors
Runner - Carbide		Square 3/8 - 4 in.
Bumpers (front/rear)		Heavy-duty/Std with tongue-type hitch

// FEATURE HIGHLIGHTS



1 Multi-LinQ plate

Standard LinQ adaptable storage. Fits 16- and 20-inch-wide LinQ accessories to maximize accessory options. Up to 125 lb (56.7 kg) of cargo capacity.



2 Utility 2-up utility seat

The ideal combination of comfort and convenience. Driver and passenger seat offering comfort and maneuverability for the driver, and convenience for the passenger.



3 LTS front suspension

Industry-exclusive telescopic front suspension enables a large, flat belly pan for exceptional deep-snow flotation.

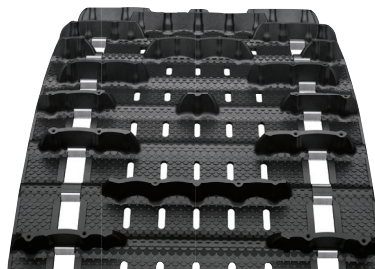


SKANDIC® SWT
900 ACE™ SHOWN



4 Pilot™ 7.4 skis

Designed to provide better reverse capability, more floatation off trail and more positive steering on trail and while hauling loads.



5 24 in. super wide track (SWT)

The industry's largest footprint provides unmatched traction and helps achieve the lowest ground pressure in snowmobiling.



6 SC™-5U articulating rear suspension

The articulated rail maximizes deep-snow traction in reverse, and its toolless locking mechanism is ideal for towing.

ski-doo

