

2021 MXZ TNT®

2021 MXZ TNT®

// PACKAGE HIGHLIGHTS

- Rotax® 850 E-TEC® and 600R E-TEC® engines
- RAS™ 3 front suspension
- REV® Gen4 platform with narrow-design bodywork
- pDrive™ clutch
- Ergo-Step side panels
- Open toe-hold
- rMotion™ rear suspension
- 15 x 129 in. track choice: 1.25 in. RipSaw® or Ice Ripper XT
- HPG™ Plus aluminum front shocks
- Brembo brake with braided stainless-steel brake line
- RER™ electronic reverse
- Warm glove box with 4 L / 1 US gal of storage
- RF D.E.S.S.™ key
- 4.5-in. digital display
- Transparent handguards



MXZ® TNT® 850 E-TEC® SHOWN



MXZ® TNT® 600R E-TEC® SHOWN



MXZ® TNT® 850 E-TEC® SHOWN

ROTAX® ENGINE	850 E-TEC®	600R E-TEC®
Engine details	Liquid-cooled, two-stroke, eRAVE™	Liquid-cooled, two-stroke, eRAVE™
Cylinders	2	2
Displacement	849 cc / 51.9 in. ³	599.4 cc / 36.6 in. ³
Bore	82 mm / 3.2 in.	72.3 mm / 2.85 in.
Stroke	80.4 mm / 3.2 in.	73 mm / 2.87 in.
Maximum engine speed	7,900 RPM	8,100 RPM
Carburation	E-TEC direct injection with additional booster injectors	E-TEC® direct injection
Recommended fuel type	Premium unleaded	Premium unleaded
Minimum octane	91	91
Fuel tank	36 L / 9.5 US gal	36 L / 9.5 US gal
Oil tank capacity	3.4 L / 3.6 qt	3.4 L / 3.6 qt
DRY WEIGHT	216 kg / 477 lb	209 kg / 462 lb

POWERTRAIN	850 E-TEC®	600R E-TEC®
Drive clutch type	pDrive™ with clickers	pDrive™
Driven clutch type	QRS	QRS
Engagement	3,200 RPM	3,400 RPM
Small sprocket number of teeth	27	23
Large sprocket number of teeth	45	45
Drive sprocket number of teeth	8	8
Drive sprocket diameter	183 mm / 7.2 in.	183 mm / 7.2 in.
Drive sprocket pitch	73 mm / 2.86 in.	73 mm / 2.86 in.
Brake system	Brembo brake with stainless-steel braided brake line	Brembo brake with stainless-steel braided brake line

SUSPENSION	850 E-TEC®	600R E-TEC®
Front suspension	RAS™ 3	RAS™ 3
Front shock	HPG™ Plus	HPG™ Plus
Front suspension travel	220 mm / 8.7 in.	220 mm / 8.7 in.
Rear suspension	rMotion™	rMotion™
Center shock	HPG™ Plus	HPG™ Plus
Rear Shock	HPG™ Plus	HPG™ Plus
Rear suspension travel	272 mm / 10.7 in.	272 mm / 10.7 in.

COLOR	850 E-TEC®	600R E-TEC®
Lava Red		
Black		
DIMENSIONS		
Vehicle overall length	2,925 mm / 115.2 in.	
Vehicle overall width	1,217 mm / 47.9 in.	
Vehicle overall height	1,267 mm / 49.9 in.	
Ski stance	1,077 mm / 42.4 in.	
Track	RipSaw®: 129 x 15 x 1.25 in. (3,269 x 381 x 32 mm)	
(Length x Width x Profile)	Ice Ripper XT: 129 x 15 x 1.25 in. (3,269 x 381 x 32 mm) opt.	

FEATURES	850 E-TEC®	600R E-TEC®
Frame	REV® Gen4	
Bodywork	Narrow design	
Skis	Pilot™ 5.7	
Seating	Trail performance	
Handlebar	U-shaped aluminum with J-hooks / Transparent handguards	
Riser block height	120 mm / 4.7 in.	
Starter	Electric	
Reverse	RER™	
Heated throttle lever / grips	Standard	
Gauge type	4.5-in. digital display	
Windshield	360 mm / 14 in.	
Runner	Square 3/8	
Carbide configuration	102 mm / 4 in. at 90°	
Bumpers (Front/Rear)	Std / Std	

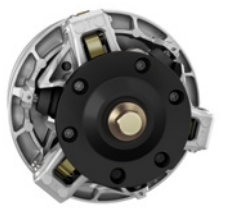
// FEATURE HIGHLIGHTS



Rotax® 850 E-TEC® and 600R E-TEC® engines
Incredible power and unmatched dynamic response with exclusive E-TEC® direct-injection technology. Plasma-coated, mono-block cylinders are used for exceptional durability, while the precision of E-TEC® injection means you get excellent fuel and oil economy.



Ergo-Step side panels
Design offers natural progression to three natural positions for different cornering styles, including a new, extreme-forward position.



pDrive™ clutch
Fast and friction-free dual rollers transfer torque in place of traditional sliding buttons. Ultra-responsive shifting, impressive RPM consistency and lightweight.



rMotion™ with 15 x 129 x 1.25 in. track
129 inch length adds even more performance to the acclaimed rMotion™ rear suspension, without sacrificing any cornering ability. Riders get more traction, better braking and more bump filtration without sacrificing the precise handling and cornering MXZ sleds are known for.



4.5-in. digital display
All-digital LCD gauge cluster with flatter viewing angle for an easy-to-read info center whether standing or sitting.



RAS™ 3 front suspension
Stable and precise front suspension design and geometry, optimized for the REV Gen4 platform.

ski-doo

