

2023

RENEGADE® ENDURO™

Adventure-ready with top-tier technology, comfort and performance.



RENEGADE ENDURO
900 ACE TURBO SHOWN

// PACKAGE HIGHLIGHTS

- Five Rotax® engines available
- 7.8 in. wide LCD display with BRP Connect
- rMotion™ X rear suspension with Air Control Suspension (ACS) rear shock
- RAS™ X front suspension
- Visor plug standard
- pDrive™ clutch
- Studded track standard
- Electric starter
- Glove box with 4 L/1 gal of storage
- Heated trail seat with 7 L/1.85 gal of storage
- Medium windshield (17 in.) with air deflectors
- Heavy-duty front bumper
- Pilot™ TX adjustable skis

ROTAX ENGINE	850 E-TEC®	600R E-TEC	900 ACE™ TURBO R	900 ACE TURBO	900 ACE
Engine details	Liquid-cooled, two-stroke, eRAVE™	Liquid-cooled, two-stroke, eRAVE	Liquid-cooled, four-stroke D.O.H.C., dry sump, turbocharged	Liquid-cooled, four-stroke D.O.H.C., dry sump, turbocharged	Liquid-cooled, four-stroke D.O.H.C., dry sump
Horsepower	165	125	180	130	95
Cylinders - Displacement	2 849 cc	2 599.4 cc	3 899 cc	3 899 cc	3 899 cc
Bore - Stroke (mm)	82 - 80.4	72.3 - 73	73 - 69.7	73 - 69.7	73 - 69.7
Carburation	E-TEC direct injection with additional booster injectors	E-TEC direct injection	EFI	EFI	EFI
Fuel type Octane	Premium unleaded 91	Premium unleaded 91	Premium unleaded 91	Premium unleaded 91	Regular unleaded 87
Fuel tank (L/US gal)	36/9.5	36/9.5	36/9.5	36/9.5	36/9.5
Oil tank capacity (L/qt)	3.4/3.6	3.4/3.6	3.3/3.5	3.3/3.5	3.3/3.5

POWERTRAIN

Drive clutch	pDrive with clickers	pDrive with clickers	pDrive	pDrive	pDrive
Driven clutch	QRS Vent	QRS	QRS Vent	QRS Vent	QRS
Drive sprocket pitch	73 mm/2.86 in.	73 mm/2.86 in.	73 mm/2.86 in.	73 mm/2.86 in.	73 mm/2.86 in.

DRY WEIGHT

Dry weight	518 lb	502 lb	556 lb	552 lb	531 lb
------------	--------	--------	--------	--------	--------

DIMENSIONS

Overall vehicle length	3,038 mm/119.6 in.
Overall vehicle width	1,217 mm/47.9 in.
Overall vehicle height	1,331 mm/52.4 in.
Ski stance	1,090 mm/43 in. adjustable
Track	Ice Ripper™ XT:
[Length x Width x Profile]	137 x 15 x 1.25 in.

SUSPENSION

Front suspension	RAS X
Front shock	HPG ¹
Front suspension travel	235 mm/9.3 in.
Rear suspension	rMotion X
Center shock	HPG
Rear shock	ACS (Air Control Suspension)
Rear suspension travel	276 mm/10.9 in.

COLOR

Black / Neo Yellow 

Black 

FEATURES

Platform	REV® Gen4
Skis	Pilot TX
Seating	Trail heated with storage
Handlebar	U-shaped aluminum with J-hooks
Riser block height	120 mm/4.7 in.
Starter	Electric
Reverse	RER™ (E-TEC engines) Electro-mechanic (ACE engines)
Air radiator	
Brake system	Brembo ¹
Heated throttle lever/grips	Standard
Gauge type	7.8 in. wide LCD color display
Windshield	430 mm/17 in.
Runner - Carbide	Adjustable blade 1/4 - 4 in.
Bumpers (front/rear)	Heavy-duty/Std

// FEATURE HIGHLIGHTS



1 Rotax 850 E-TEC and 900 ACE Turbo R engines

Two incredibly powerful and reliable options, offering top performance for the most demanding riders.



2 rMotion X rear suspension with Air Control Shock (ACS)

rMotion X redefines big-bump capability in the harshest terrain, while improving overall handling thanks to a longer front arm with adjustable-angle design. Combined with ACS and its on-the-fly preload settings, you have the best of both handling and adjustable comfort.

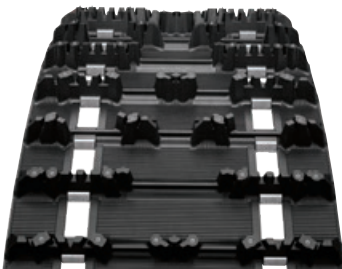


3 RAS X front suspension

Flatter cornering and precision handling in all conditions. Developed in tandem with the rMotion X rear suspension to raise the bar in trail snowmobile chassis performance. Wider, adjustable ski stance and +1.0 mm of suspension stroke maximize stability, capability and comfort.



RENEGADE ENDURO
900 ACE TURBO SHOWN



4 Standard studded track

1.25 in. Ice Ripper XT direct from the factory with carbide studs for added grip.



5 7.8 in. LCD color display with BRP Connect

Wide-screen full-color display lets riders truly customize their ride from behind the bars. Choose your preferred sled info, and see app-integrated information in a split-screen format with GPS, Bluetooth[®] music, helmet-to-helmet communication and more.



6 Pilot TX skis

Redesigned with a longer front keel to provide more positive ski traction and less darting, this ski lets riders dial in their preferred amount of ski bite.

ski-doo

