

2022

RENEGADE® ENDURO™

Adventure-ready with top-tier technology, comfort and performance.

// WHAT'S NEW

- Rotax® 900 ACE™ Turbo R with cable throttle housing and electro-mechanical reverse
- 900 ACE Turbo – 130 engine available
- 7.8 in. wide LCD display with BRP Connect standard
- rMotion™ X rear suspension with Air Control Suspension (ACS) rear shock
- RAS™ X front suspension
- Visor plug standard
- Pilot TX skis
- Standard with two sets of LinQ attachment points



RENEGADE® ENDURO™
900 ACE™ TURBO R SHOWN

RENEGADE® ENDURO™
850 E-TEC® SHOWN

// PACKAGE HIGHLIGHTS

- Rotax® 850 E-TEC®, 600R E-TEC® and 900 ACE™ engines available
- pDrive™ clutch
- Electric starter
- Glove box with 4 L/1 gal of storage
- Heated trail seat with 7 L/1.85 gal of storage
- Medium windshield (17 in.) with air deflectors
- Heavy-duty front bumper

ROTAX® ENGINE	850 E-TEC®	600R E-TEC®	900 ACE™ TURBO R	900 ACE™ TURBO – 130	900 ACE™
Engine details	Liquid-cooled, two-stroke, eRAVE™	Liquid-cooled, two-stroke, eRAVE™	Liquid-cooled, four-stroke D.O.H.C., dry sump, turbocharged	Liquid-cooled, four-stroke D.O.H.C., dry sump, turbocharged	Liquid-cooled, four-stroke D.O.H.C., dry sump
Horsepower	165	125	180	130	95
Cylinders – Displacement	2 849 cc	2 599.4 cc	3 899 cc	3 899 cc	3 899 cc
Bore – Stroke	82 mm – 80.4 mm	72.3 mm – 73 mm	73 mm – 69.7 mm	73 mm – 69.7 mm	73 mm – 69.7 mm
Carburation	E-TEC® direct injection with additional booster injectors	E-TEC® direct injection	EFI	EFI	EFI
Fuel type Octane	Premium unleaded 91	Premium unleaded 91	Premium unleaded 91	Premium unleaded 91	Regular unleaded 87
Fuel tank	36 L/9.5 US gal	36 L/9.5 US gal	36 L/9.5 US gal	36 L/9.5 US gal	36 L/9.5 US gal
Oil tank capacity	3.4 L/3.6 qt	3.4 L/3.6 qt	3.3 L/3.5 qt	3.3 L/3.5 qt	3.3 L/3.5 qt

POWERTRAIN

Drive clutch	pDrive™ with clickers	pDrive™ with clickers	pDrive™	pDrive™	pDrive™ with slider shoes – QRS
Driven clutch	QRS Vent	QRS	QRS Vent	QRS Vent	QRS
Drive sprocket pitch	73 mm/2.86 in.	73 mm/2.86 in.	73 mm/2.86 in.	73 mm/2.86 in.	73 mm/2.86 in.

DRY WEIGHT

Dry weight	236 kg/519 lb	229 kg/504 lb	253 kg/558 lb	251 kg/552 lb	241 kg/529 lb
------------	---------------	---------------	---------------	---------------	---------------

DIMENSIONS

Overall vehicle length	3,038 mm/119.6 in.
Overall vehicle width	1,217 mm/47.9 in.
Overall vehicle height	1,331 mm/52.4 in.
Ski stance	1,077 mm/42.4 in.
Track	RipSaw: 137 x 15 x 1.25 in. Ice Ripper XT: 137 x 15 x 1.25 in.

SUSPENSION

Front suspension	RAS™ X
Front shock	HPG™
Front suspension travel	235 mm/9.3 in.
Rear suspension	rMotion™ X
Center shock	HPG™
Rear shock	ACS (Air Control Suspension)
Rear suspension travel	276 mm/10.9 in.

COLOR

Scandinavian Blue/Manta Green

Black

FEATURES

Frame	REV® Gen4
Bodywork	Wide design
Skis	Pilot™ TX
Seating	Trail heated with storage
Handlebar	U-shaped aluminum with J-hooks
Riser block height	120 mm/4.7 in.
Starter	Electric
Reverse	RER™ (2-stroke engines) Electro-mechanic (4-stroke engines)
Air radiator	
Brake system	Brembo brake with stainless-steel braided brake line
Heated throttle lever/grips	Standard
Gauge type	7.8 in. wide LCD color display
Windshield	430 mm/17 in.
Runner – Carbide	Adjustable blade 1/4 – 4 in.
Bumpers (front/rear)	Heavy-duty/Std

// FEATURE HIGHLIGHTS



1 Rotax® 850 E-TEC® and 900 ACE™ Turbo R engines

The most powerful 2-stroke and 4-stroke options in the lineup, offering top performance for the most demanding riders.



2 rMotion™ X rear suspension with Air Control Shock (ACS)

rMotion X redefines big-bump capability in the harshest terrain, while improving overall handling thanks to a longer front arm with adjustable-angle design. Combined with ACS and its on-the-fly preload settings, you have the best of both handling and adjustable comfort.

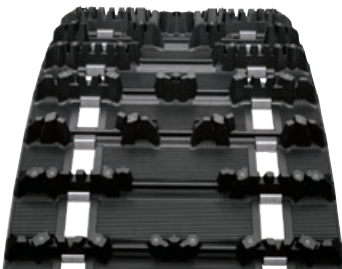


3 RAS™ X front suspension

Flatter cornering and precision handling in all conditions. Developed in tandem with the rMotion X rear suspension to raise the bar in trail snowmobile chassis performance. Wider, adjustable ski stance and +1.0 mm of suspension stroke maximize stability, capability and comfort.



RENEGADE® ENDURO™
900 ACE™ TURBO R SHOWN



4 Standard studded track

1.25 in. Ice Ripper XT direct from the factory with carbide studs for added grip.



5 Large panoramic 7.8 in. wide LCD color display

Wide-screen full-color display lets riders truly customize their ride from behind the bars. Choose your preferred sled info, and see app integrated-information in a split-screen format with GPS, Bluetooth music, helmet-to-helmet communication and more.



6 Pilot™ TX skis

Redesigned with a longer front keel to provide more positive ski traction and less darting, this ski lets riders dial in their preferred amount of ski bite.

ski-doo

