

2018 MXZ[®] SPORT

PACKAGE HIGHLIGHTS

- Rotax[®] engine with 420W magneto
- REV-XS[™] platform
- SC[™]-5 rear suspension
- Brembo brake with braided stainless-steel brake line
- Mechanical reverse
- Analog gauge with display
- Electric fuel gauge
- Straight aluminum handlebar with integrated J-hooks
- Comfortable REV-XP[™] seat with 7 L / 1.9 US gal of storage
- RF D.E.S.S.[™] key
- Extended heat exchanger for better cooling capacity
- iTC[™] Engine mapping modes (Standard, Sport or ECO[®])
- Learning Key included



MXZ[®] SPORT 600 ACE shown

ROTAX[®] ENGINE

600 ACE

Engine details	Liquid-cooled, four-stroke D.O.H.C., dry sump
Cylinders	2
Displacement	600 cc / 36.6 in. ³
Bore	74 mm / 2.9 in.
Stroke	69.7 mm / 2.7 in.
Maximum engine speed	7,250 RPM
Carburation	EFI
Recommended fuel type	Regular unleaded
Minimum octane	87
Fuel tank	40 L / 10.6 US gal
Oil tank capacity	2.1 L / 2.2 qt

POWERTRAIN

Drive clutch type	eDrive [™] 2
Driven clutch type	QRS (short shaft)
Engagement	2,200 RPM
Small sprocket number of teeth	24
Large sprocket number of teeth	51
Drive sprocket number of teeth	8
Drive sprocket diameter	183 mm / 7.2 in.
Brake system	Brembo brake with braided stainless-steel brake line

DRY WEIGHT

208 kg / 459 lb

FEATURES

Frame	REV-XS [™]	Starter	Electric	Mirrors	Optional
Skis	Pilot [™] 5.7	Reverse	Mechanical	Windshield	375 mm / 15 in.
Seating	REV-XP [™] with storage	Heated throttle lever	Standard	Runner	Square 5/16
Handlebar	Straight aluminum with J-hooks	Heated grips	Standard	Carbide configuration	102 mm / 4 in. at 90°
Riser block height	115 mm / 4.5 in.	Gauge	Analog with display	Hitch	Optional

COLOR

White / Sunburst Yellow

DIMENSIONS

Vehicle overall length	2,905 mm / 114.4 in.
Vehicle overall width	1,217 mm / 47.9 in.
Vehicle overall height	1,210 mm / 47.6 in.
Ski stance	1,077 mm / 42.4 in.
Ski overall length	1,066 mm / 42 in.
Track nominal width	381 mm / 15 in.
Track nominal length	3,051 mm / 120 in.
Track profile height	31.8 mm / 1.25 in. RipSaw [®]

SUSPENSION

Front suspension	Dual A-arms
Front shock	Motion Control
Front suspension max. travel	220 mm / 8.7 in.
Rear suspension	SC [™] -5
Center shock	Motion Control
Rear shock	Motion Control
Rear suspension max. travel	250 mm / 9.8 in.



MXZ[®] SPORT 600 ACE shown



MXZ[®] SPORT 600 ACE shown

FEATURE HIGHLIGHTS



iTC™ with ECO[®] mode

The industry's only Intelligent Throttle Control (iTC™) throttle-by-wire technology. Includes three shift-on-the-fly driving modes (Sport, Standard, ECO[®]), Learning Key feature and optional finger throttle operation.



Finger throttle position

Throttle block can be rotated to be used as either a traditional thumb throttle or unique finger throttle.



Handlebar control

Redesigned to be more intuitive. Warmer switches oriented to up/down operation.



LinQ™ cargo system (option)

Our cargo attachment system is the hassle-free way to connect cargo bags or a fuel caddy to your sled in seconds.



Analog gauge with display

GAUGE FEATURES

Speedometer	Standard
Tachometer	Standard
Fuel	Standard
Engine temperature	Optional

2018 MXZ[®] SPORT

PACKAGE HIGHLIGHTS

- REV-XP™ platform
- SC™-5 rear suspension
- Brembo brake with braided stainless-steel brake line
- RER™ electronic reverse
- **Standard electric start**
- Analog gauge with display
- Electric fuel gauge
- Straight aluminum handlebar with integrated J-hooks
- Comfortable REV-XP™ seat with 7 L / 1.9 US gal of storage



MXZ[®] SPORT 600 Carb shown

ROTAX[®] ENGINE

600 CARB

Engine details	Liquid-cooled, R.A.V.E.™
Cylinders	2
Displacement	597 cc / 36.4 in. ³
Bore	76 mm / 3 in.
Stroke	65.8 mm / 2.6 in.
Maximum engine speed	8,100 RPM
Carburation	2X TM-40
Recommended fuel type	Regular unleaded
Minimum octane	87
Fuel tank	40 L / 10.6 US gal
Oil tank capacity	3.7 L / 3.9 qt

POWERTRAIN

Drive clutch type	TRA™ III
Driven clutch type	QRS (short shaft)
Engagement	3,800 RPM
Small sprocket number of teeth	25
Large sprocket number of teeth	45
Drive sprocket number of teeth	8
Drive sprocket diameter	183 mm / 7.2 in.
Brake system	Brembo brake with braided stainless-steel brake line

DRY WEIGHT

203 kg / 447 lb

FEATURES

Frame	REV-XP™	Starter	Electric	Mirrors	Optional
Skis	Pilot™ 5.7	Reverse	RER™	Windshield	375 mm / 15 in.
Seating	REV-XP™ with storage	Heated throttle lever	Standard	Runner	Square 5/16
Handlebar	Straight aluminum with J-hooks	Heated grips	Standard	Carbide configuration	102 mm / 4 in. at 90°
Riser block height	115 mm / 4.5 in.	Gauge	Analog with display	Hitch	Optional

COLOR

Black 

DIMENSIONS

Vehicle overall length	2,905 mm / 114.4 in.
Vehicle overall width	1,217 mm / 47.9 in.
Vehicle overall height	1,210 mm / 47.6 in.
Ski stance	1,077 mm / 42.4 in.
Ski overall length	1,066 mm / 42 in.
Track nominal width	381 mm / 15 in.
Track nominal length	3,051 mm / 120 in.
Track profile height	31.8 mm / 1.25 in. RipSaw [®]

SUSPENSION

Front suspension	Dual A-arms
Front shock	Motion Control
Front suspension max. travel	220 mm / 8.7 in.
Rear suspension	SC™-5
Center shock	Motion Control
Rear shock	Motion Control
Rear suspension max. travel	250 mm / 9.8 in.

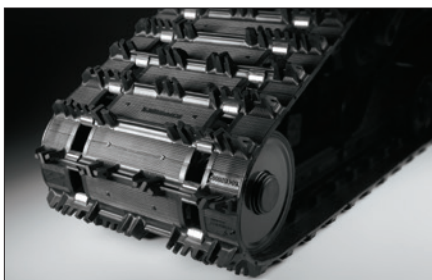


MXZ® SPORT 600 Carb shown



MXZ® SPORT 600 Carb shown

FEATURE HIGHLIGHTS



1.25 in. RipSaw⁺ track

Lightweight track provides great traction for supreme trail grip.



Comfortable REV-XP™ seat

Sleek, yet comfortable. Includes trunk with 7 L (1.9 US gal).



Pilot™ 5.7 skis

Deliver outstanding grip and bite in corners with virtually no darting.



LinQ™ cargo system (option)

Our cargo attachment system is the hassle-free way to connect cargo bags or a fuel caddy to your sled in seconds.



Analog gauge with display

GAUGE FEATURES

Speedometer	Standard
Tachometer	Standard
Fuel	Standard
Engine temperature	Optional